

205 DOWNTOWN

205
AN ARKAN PALM DEVELOPMENT



**Welcome to the
Downtown of
Sheikh Zayed**





205

AN ARKAN PALM DEVELOPMENT

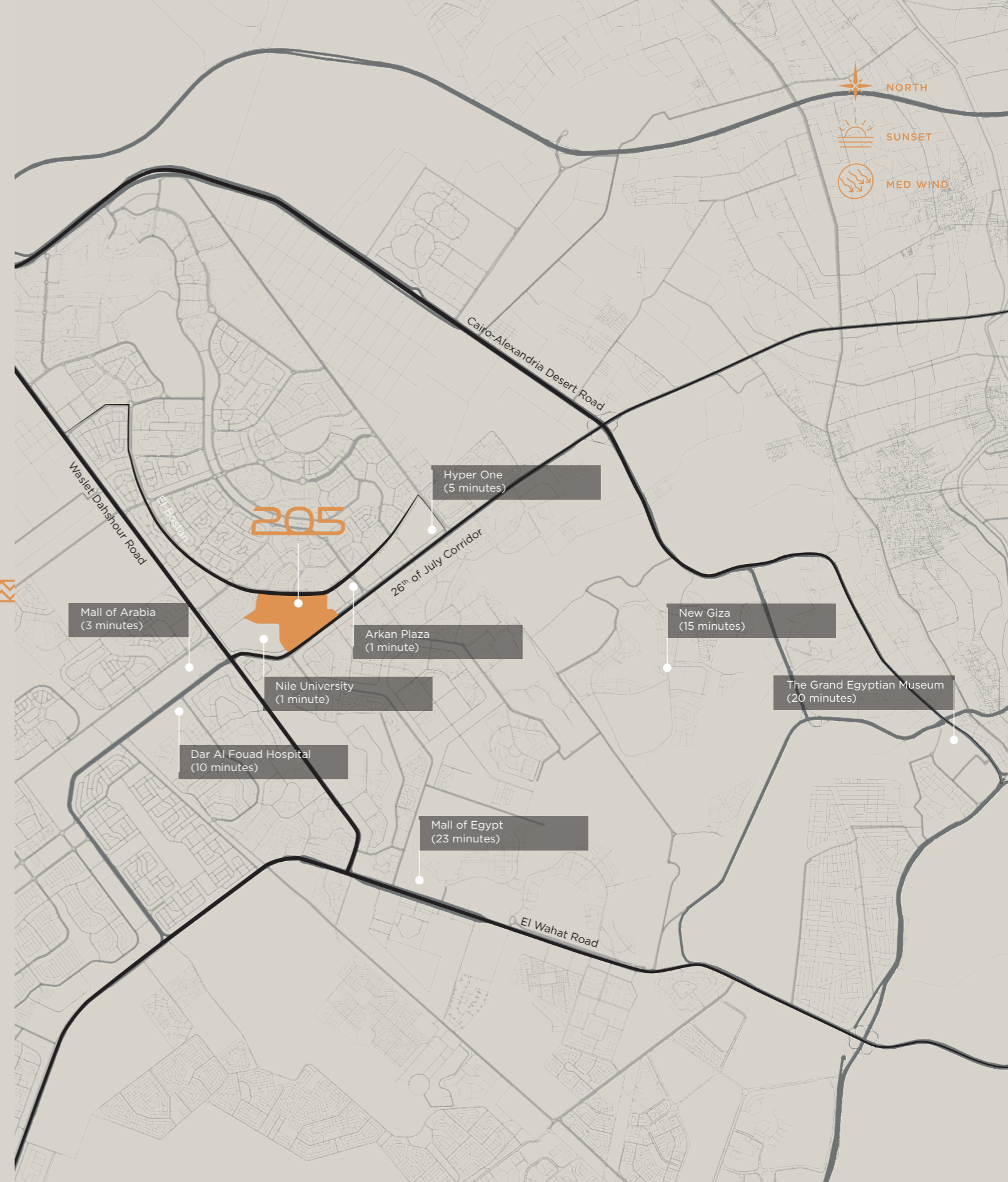
205 is a fully-fledged, world-class destination in West Cairo, bringing forth an unprecedented, innovative urban concept with never-before-seen architecture, landscaping and design to the city of Sheikh Zayed. With an immense land area of 205 acres, this project fittingly qualifies as a development of unmatched proportions, exemplifying the true meaning behind 'a city within a city.'

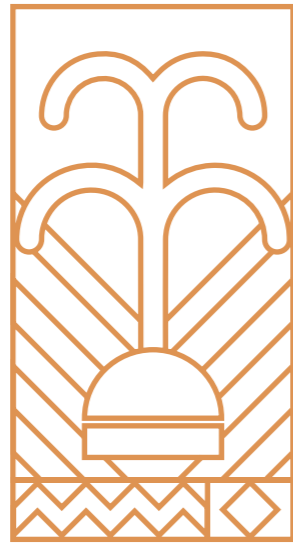
205 caters to the diverse needs and lifestyle choices of its residents, providing them with a suite of amenities and comforts that are unmatched in West Cairo.





LOCATION MAP





205 DOWNTOWN

205 Downtown has got you covered with all your needs. The unique space is located in the heart of Sheikh Zayed. 205 Downtown offers offices for achieving the utmost productivity as well as, retail and commercial spaces for your next shopping splurge, a signature hotel providing ultimate tranquility. Enjoy all of your necessities at the center of it all.





205
DOWNTOWN

CANAL WALK ISLAND

INTERNATIONAL
SCHOOL

EL SAFA MED PARK

THE TOWERS

BUSINESS PARK

SUNSET

26th OF JULY CORRIDOR



205 MASTERPLAN





METROPOLIS OFFICES

BOUTIQUE RESIDENTIAL

UPSALE RETAIL

SIGNATURE HOTEL

DOWNTOWN
MASTERPLAN





Pastry

Pies 'n' Fries





Upscale Retail

The Ultimate Shopping
Experience





Signature Hotel

Pamper Your Guests Only A
Few Blocks Away





Boutique Residences

Your Home at The Center
Of It All





METROPOLIS

◆ OFFICES ◆

205's Metropolis Offices are an integral part of the 205 Downtown. Metropolis Offices consists of three office buildings overlooking the stunning view of 205 and offer easy, hassle free access right off of El Bostan Road ready to meet your vigorous and essential working needs.



METROPOLIS
◆ OFFICES ◆



**METROPOLIS
MASTERPLAN**



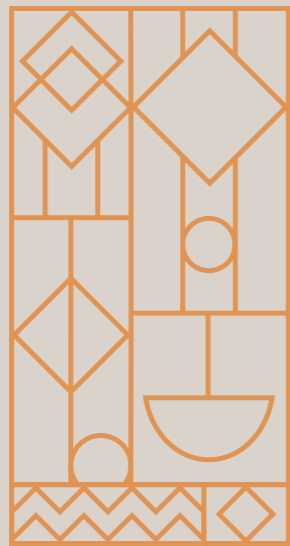




Workplace

Find The Perfect Space For
Your Business At Metropolis
Offices





METROPOLIS ♦ I
♦ OFFICES ♦

Floor Plans



First Floor

Unit Number	Gross Area (sqm)
M1-1-01	94
M1-1-02	138
M1-1-03	80
M1-1-04	107
M1-1-05	137
M1-1-06	84
M1-1-07	65
M1-1-08	102
M1-1-09	70
M1-1-10	127
M1-1-11	78
Total	1086



Second Floor

Unit Number	Gross Area (sqm)
M1-2-01	68
M1-2-02	99
M1-2-03	75
M1-2-04	183
M1-2-05	113
M1-2-06	108
M1-2-07	65
M1-2-08	100
M1-2-09	68
M1-2-10	135
M1-2-11	93
Total	1107



Third Floor

Unit Number	Gross Area (sqm)
M1-3-01	71
M1-3-02	99
M1-3-03	93
M1-3-04	95
M1-3-05	70
M1-3-06	113
M1-3-07	103
M1-3-08	64
M1-3-09	100
M1-3-10	68
M1-3-11	135
M1-3-12	93
Total	1104



Fourth Floor

Unit Number	Gross Area (sqm)
M1-4-01	99
M1-4-02	101
M1-4-03	154
M1-4-04	113
M1-4-05	108
M1-4-06	170
M1-4-07	68
M1-4-08	135
M1-4-09	93
M1-4-10	70
Total	1111



Fifth Floor

Unit Number	Gross Area (sqm)
M1-5-01	99
M1-5-02	94
M1-5-03	154
M1-5-04	108
M1-5-05	103
M1-5-06	170
M1-5-07	68
M1-5-08	135
M1-5-09	158
Total	1091



Sixth Floor

Unit Number	Gross Area (sqm)
M1-6-01	96
M1-6-02	101
M1-6-03	155
M1-6-04	109
M1-6-05	104
M1-6-06	170
M1-6-07	205
M1-6-08	90
M1-6-09	63
Total	1093



Seventh Floor

Unit Number	Gross Area (sqm)
M1-7-01	95
M1-7-02	103
M1-7-03	155
M1-7-04	109
M1-7-05	103
M1-7-06	170
M1-7-07	77
M1-7-08	129
M1-7-09	90
M1-7-10	63
Total	1094



Eighth Floor

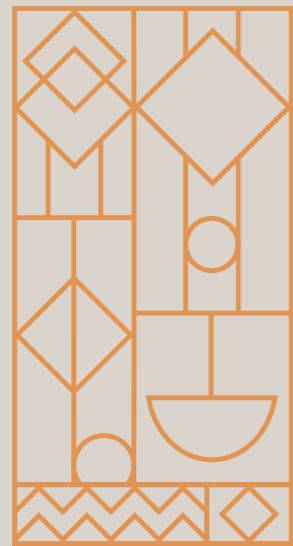
Unit Number	Gross Area (sqm)
M1-8-01	363
M1-8-03	202
M1-8-04	170
M1-8-05	75
M1-8-06	270
Total	1080



Ninth Floor

Unit Number	Gross Area (sqm)
M1-9-01	183
M1-9-02	155
M1-9-03	202
M1-9-04	170
M1-9-05	205
M1-9-06	140
Total	1055





METROPOLIS ♦ III
♦ OFFICES ♦

Floor Plans



First Floor

Unit Number	Gross Area (sqm)
M3-1-01	79
M3-1-02	134
M3-1-03	69
M3-1-04	104
M3-1-05	72
M3-1-06	85
M3-1-07	139
M3-1-08	106
M3-1-09	80
M3-1-10	135
M3-1-11	94
Total	1098



Second Floor

Unit Number	Gross Area (sqm)
M3-2-01	96
M3-2-02	134
M3-2-03	69
M3-2-04	106
M3-2-05	72
M3-2-06	106
M3-2-07	111
M3-2-08	154
M3-2-09	104
M3-2-10	98
M3-2-11	69
Total	1119



Third Floor

Unit Number	Gross Area (sqm)
M3-3-01	96
M3-3-02	134
M3-3-03	69
M3-3-04	106
M3-3-05	72
M3-3-06	106
M3-3-07	111
M3-3-08	154
M3-3-09	104
M3-3-10	98
M3-3-11	69
Total	1119



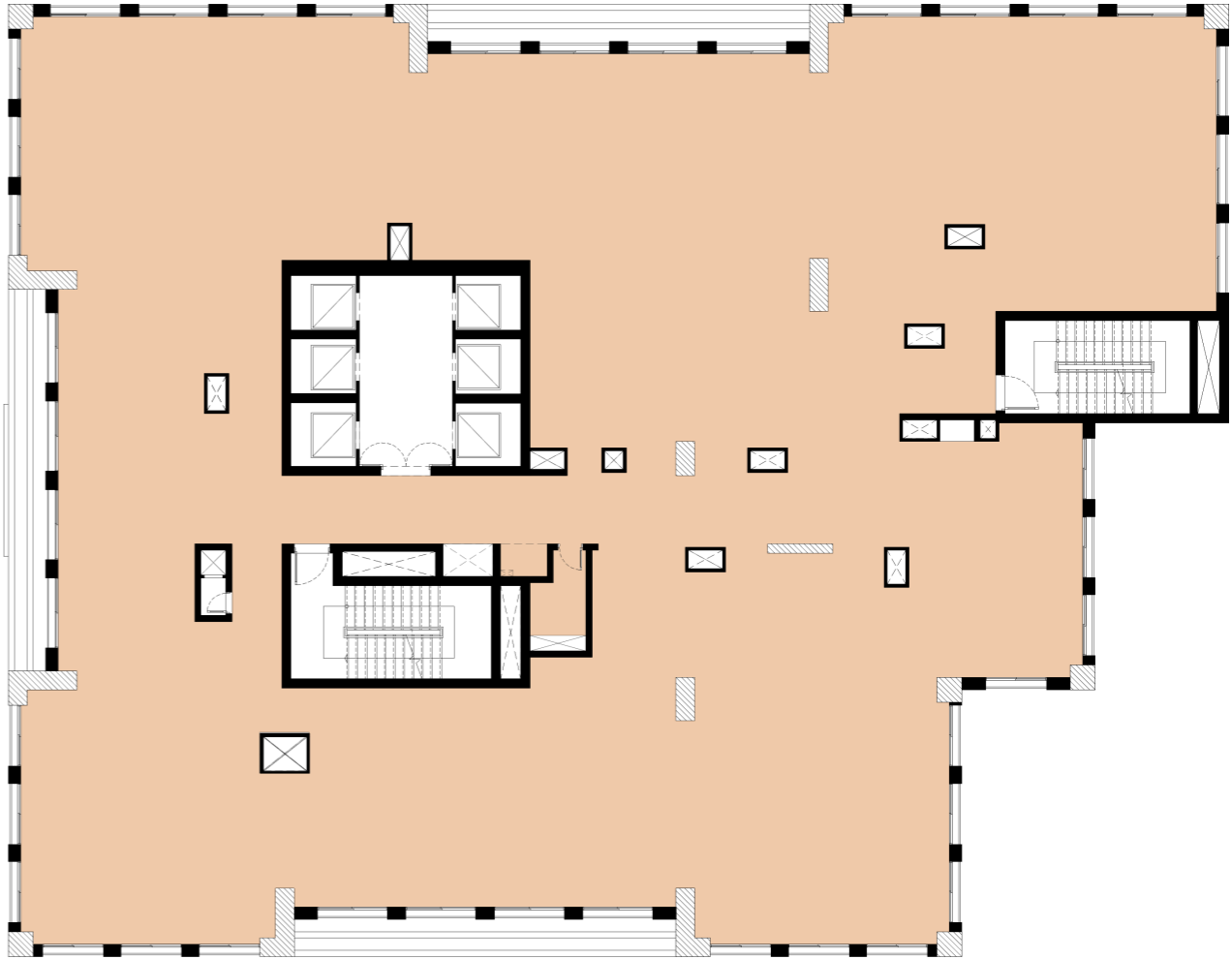
Fourth Floor

Unit Number	Gross Area (sqm)
M3-4-01	164
M3-4-02	204
M3-4-03	106
M3-4-04	72
M3-4-05	106
M3-4-06	111
M3-4-07	154
M3-4-08	104
M3-4-09	98
Total	1119



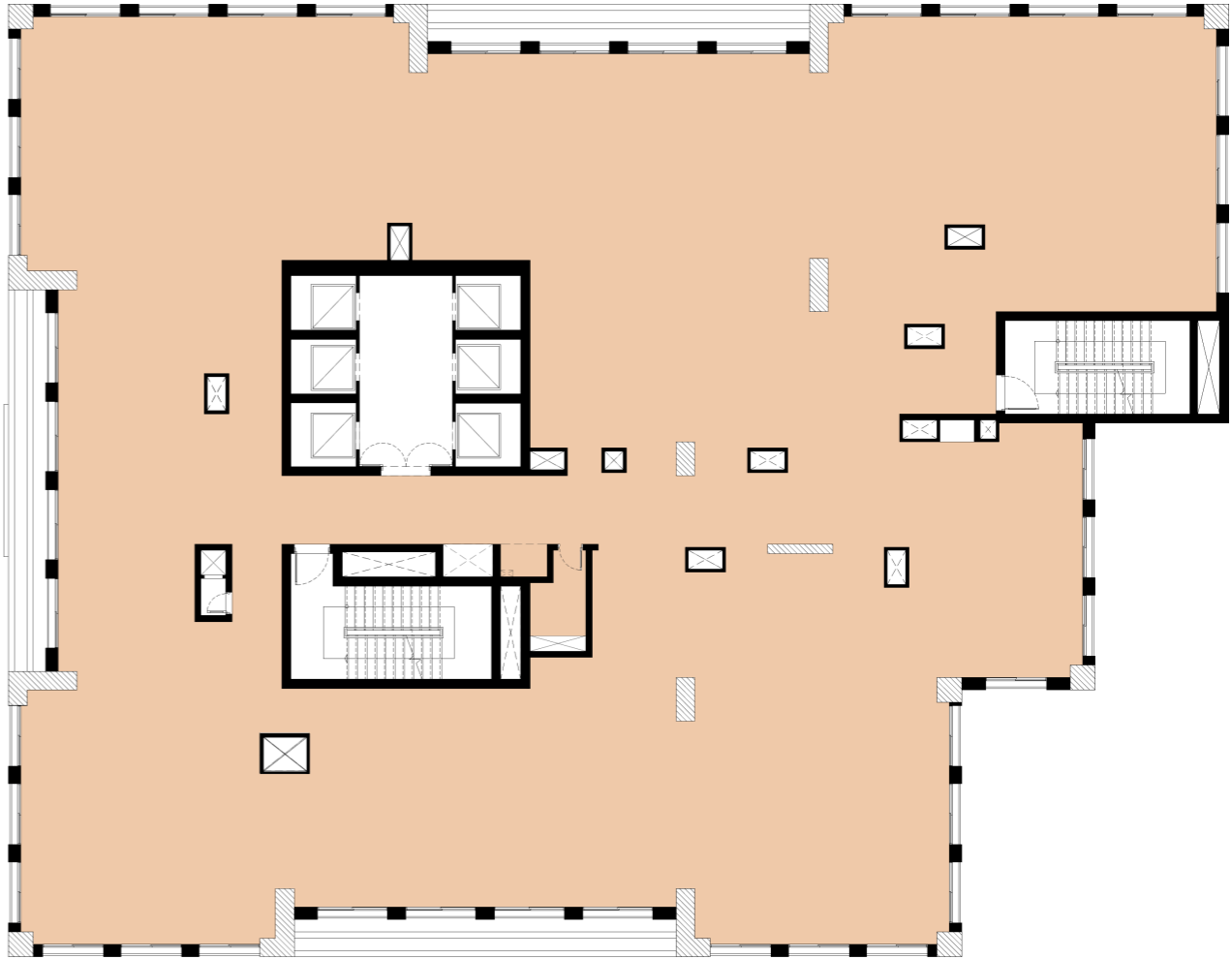
Fifth Floor

Unit Number	Gross Area (sqm)
M3-5	1062



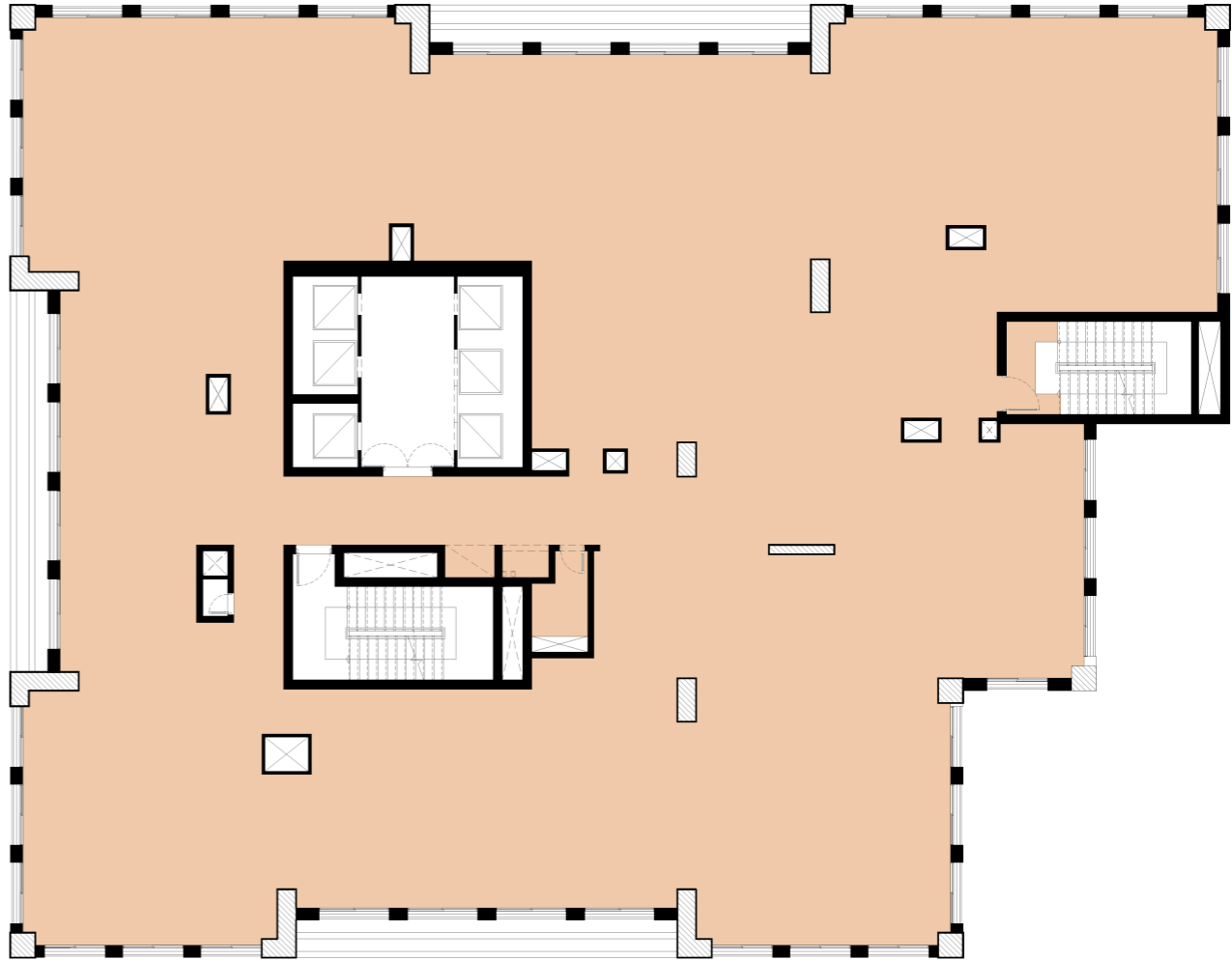
Sixth Floor

Unit Number	Gross Area (sqm)
M3-6	1168



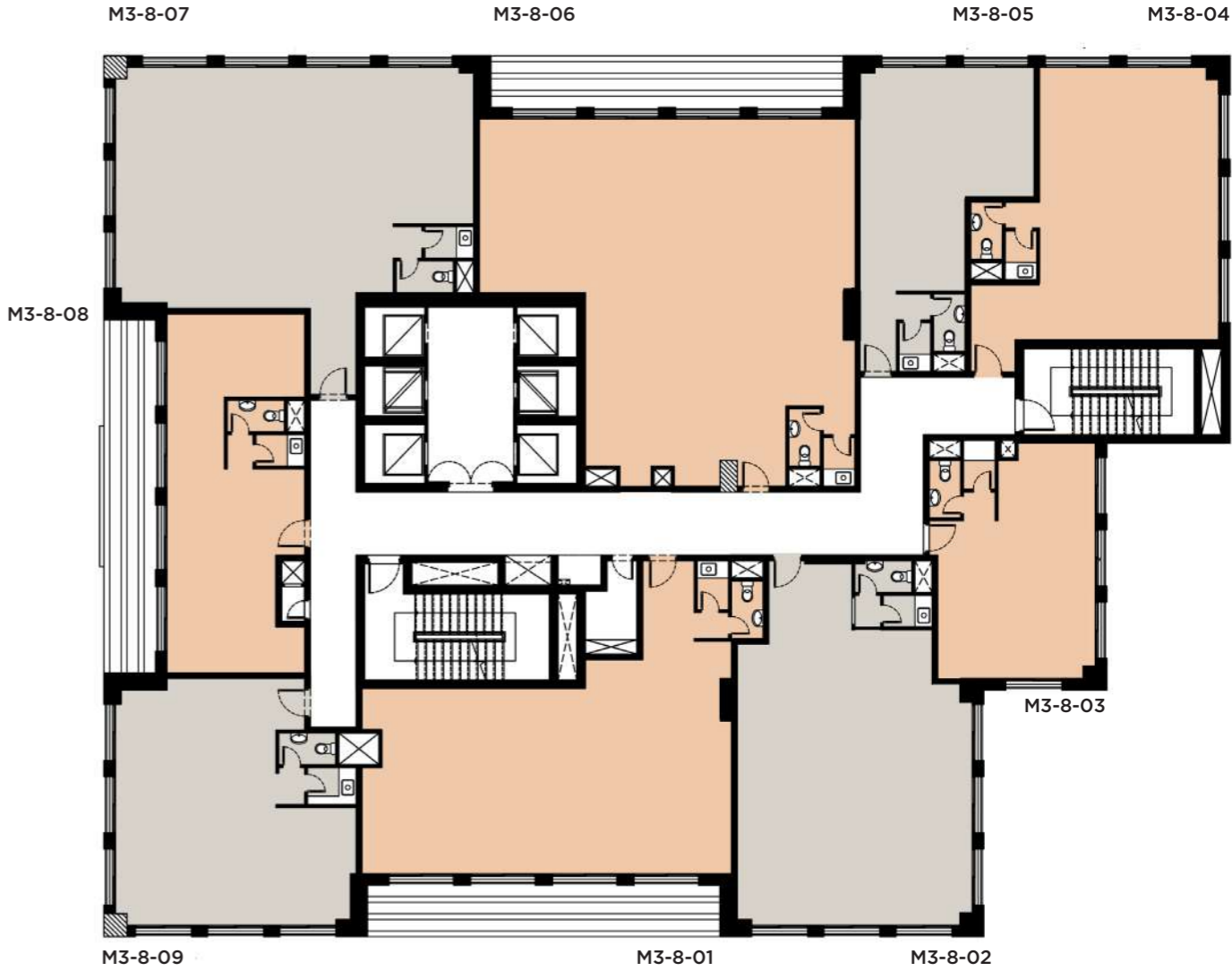
Seventh Floor

Unit Number	Gross Area (sqm)
M3-7	1062



Eighth Floor

Unit Number	Gross Area (sqm)
M3-8-01	145
M3-8-02	134
M3-8-03	69
M3-8-04	106
M3-8-05	72
M3-8-06	199
M3-8-07	154
M3-8-08	84
M3-8-09	98
Total	1061



Ninth Floor

Unit Number	Gross Area (sqm)
M3-9-01	87
M3-9-02	134
M3-9-03	69
M3-9-04	106
M3-9-05	72
M3-9-06	98
M3-9-07	102
M3-9-08	154
M3-9-09	84
M3-9-10	98
M3-9-11	59
Total	1063





ARKAN PALM

15760

arkanpalm.com